

Sparton Rd between West Saanich Rd and Oldfield Rd

February 25, 2020 To February 27, 2020



The data presented here is for information purposes only and should not be considered authoritative for construction, geotechnical, engineering, navigational, legal, or other site-specific uses. The information shared is owned by the Transportation Division of the Engineering Department at the District of Saanich. Accuracy is not guaranteed.

Start Date: 24-Feb-20
 Start Time: 0:43
 Station ID: C0066-01

Location 1: Sparton Rd between West Saanich Rd and Oldfield Rd

Note:

DATE:	February 24, 2020		February 25, 2020		February 26, 2020		February 27, 2020		February 28, 2020		WK AVG		WK AVG	HOURLY
	MON		TUE		WED		THURS		FRI				CH 1+2	%
Time:	EB	WB	EB	WB	EB	WB	EB	WB	EB	WB	EB	WB		
12-1 AM			0	2	0	1	2	3			1	2	3	0.2%
1-2 AM			1	1	0	0	0	0			0	0	1	0.1%
2-3 AM			0	1	0	1	0	0			0	1	1	0.1%
3-4 AM			1	1	1	1	1	2			1	1	2	0.2%
4-5 AM			1	2	1	1	1	0			1	1	2	0.2%
5-6 AM			7	1	7	1	12	1			9	1	10	0.8%
6-7 AM			18	7	22	6	27	4			22	6	28	2.4%
7-8 AM			74	18	51	20	61	19			62	19	81	6.9%
8-9 AM			77	40	78	41	85	42			80	41	121	10.3%
9-10 AM			55	33	47	37	54	30			52	33	85	7.3%
10-11 AM			30	20	42	31	41	28			38	26	64	5.5%
11-12 PM			35	40	37	34	40	34			37	36	73	6.2%
12-1 PM			33	42	44	31	40	44			39	39	78	6.6%
1-2 PM			34	33	40	47	43	47			39	42	81	6.9%
2-3 PM			42	48	58	41	44	55			48	48	96	8.2%
3-4 PM			54	67	72	61	47	61			58	63	121	10.3%
4-5 PM			41	67	84	55	44	58			56	60	116	9.9%
5-6 PM			36	57	53	53	42	51			44	54	97	8.3%
6-7 PM			21	17	25	25	24	24			23	22	45	3.9%
7-8 PM			8	19	7	13	7	12			7	15	22	1.9%
8-9 PM			12	11	9	16	7	16			9	14	24	2.0%
9-10 PM			1	6	5	8	8	7			5	7	12	1.0%
10-11 PM			2	5	2	6	3	3			2	5	7	0.6%
11-12 AM			0	1	2	3	0	6			1	3	4	0.3%
LANES			583	539	687	533	633	547			634	540	1174	100.0%
TOTAL			1122		1220		1180				1180			
	MON		TUE		WED		THURS		FRI		WK AVG			

PEAK HOUR					TOTAL VEHICALS-PEAK PERIODS		2 HOUR PEAK INTERVALS				
MAX. 7 - 9 am PEAK HOUR	121	⇒	10.3%	between 8-9 AM	567	⇒	6 HR TOTAL	2 HR AM (7 - 9 AM)			
MAX. 7 - 11 am PEAK HOUR	121	⇒	10.3%	between 8-9 AM	416	⇒	4 HR TOTAL	VEH / HR	VEH / 2HR	2 HR %	
MAX. 11 am - 1 pm PEAK HOUR	78	⇒	6.6%	between 12-1 PM				7-8 AM	81	202	17.2%
MAX. 11 am - 3 pm PEAK HOUR	96	⇒	8.2%	between 2-3 PM				8-9 AM	121		
MAX. 4 - 6 pm PEAK HOUR	116	⇒	9.9%	between 4-5 PM				2 HR NOON (11 - 1 PM)			
MAX. 3 - 6 pm PEAK HOUR	121	⇒	10.3%	between 3-4 PM				VEH / HR	VEH / 2HR	2 HR %	
								11-12 PM	73	151	12.9%
								12-1 PM	78		
								2 HR PM (4 - 6 PM)			
								VEH / HR	VEH / 2HR	2 HR %	
								4-5 PM	116	214	18.2%
								5-6 PM	97		

Sparton Rd between West Saanich Rd and Oldfield Rd

Westbound

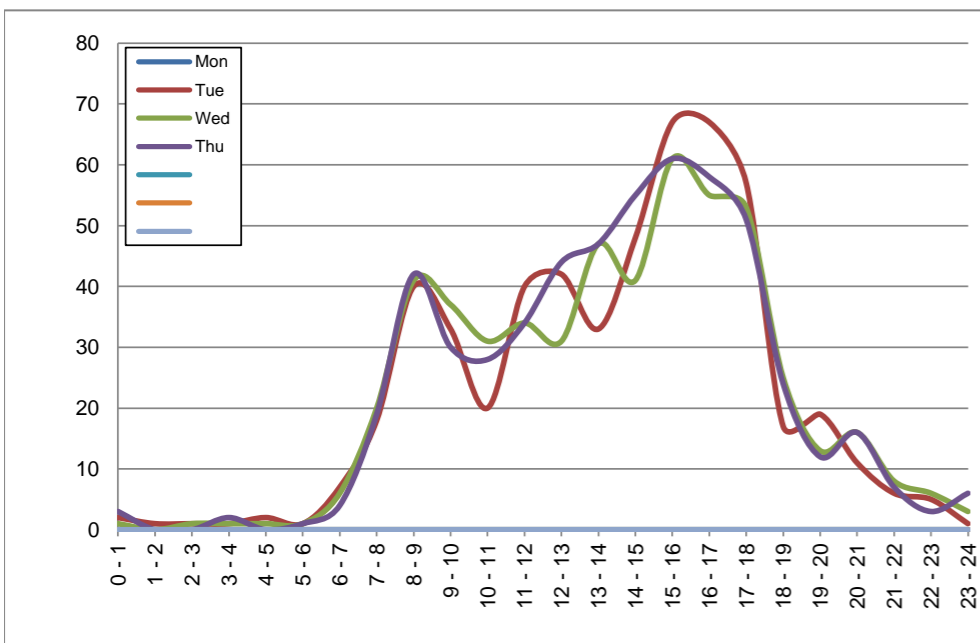
February 24, 2020 to February 27, 2020

Hourly Volumes

Time Period	Mon	Tue	Wed	Thu			
	Feb 24	Feb 25	Feb 26	Feb 27			
0 - 1		2	1	3			
1 - 2		1	0	0			
2 - 3		1	1	0			
3 - 4		1	1	2			
4 - 5		2	1	0			
5 - 6		1	1	1			
6 - 7		7	6	4			
7 - 8		18	20	19			
8 - 9		40	41	42			
9 - 10		33	37	30			
10 - 11		20	31	28			
11 - 12		40	34	34			
12 - 13		42	31	44			
13 - 14		33	47	47			
14 - 15		48	41	55			
15 - 16		67	61	61			
16 - 17		67	55	58			
17 - 18		57	53	51			
18 - 19		17	25	24			
19 - 20		19	13	12			
20 - 21		11	16	16			
21 - 22		6	8	7			
22 - 23		5	6	3			
23 - 24		1	3	6			
Day Total		539	533	547			

15-Minute Volumes

Time Start	Mon	Tue	Wed	Thu				Time Start	Mon	Tue	Wed	Thu			
	Feb 24	Feb 25	Feb 26	Feb 27					Feb 24	Feb 25	Feb 26	Feb 27			
0:00		0	0	2				12:00		6	8	21			
0:15		0	1	1				12:15		10	9	7			
0:30		1	0	0				12:30		10	4	4			
0:45		1	0	0				12:45		16	10	12			
1:00		0	0	0				13:00		7	5	10			
1:15		0	0	0				13:15		7	14	12			
1:30		0	0	0				13:30		7	18	13			
1:45		1	0	0				13:45		12	10	12			
2:00		0	0	0				14:00		15	8	15			
2:15		1	0	0				14:15		8	10	10			
2:30		0	1	0				14:30		10	7	12			
2:45		0	0	0				14:45		15	16	18			
3:00		0	1	1				15:00		12	17	13			
3:15		1	0	0				15:15		14	7	12			
3:30		0	0	0				15:30		16	19	20			
3:45		0	0	1				15:45		25	18	16			
4:00		1	0	0				16:00		20	19	17			
4:15		1	1	0				16:15		17	12	11			
4:30		0	0	0				16:30		17	15	14			
4:45		0	0	0				16:45		13	9	16			
5:00		0	0	0				17:00		17	19	16			
5:15		0	1	1				17:15		20	12	20			
5:30		1	0	0				17:30		8	14	3			
5:45		0	0	0				17:45		12	8	12			
6:00		0	0	0				18:00		11	7	7			
6:15		1	0	2				18:15		0	11	8			
6:30		3	2	1				18:30		5	4	5			
6:45		3	4	1				18:45		1	3	4			
7:00		2	1	4				19:00		4	1	0			
7:15		4	3	5				19:15		7	2	6			
7:30		6	11	5				19:30		1	4	4			
7:45		6	5	5				19:45		7	6	2			
8:00		9	8	6				20:00		1	5	8			
8:15		8	11	11				20:15		5	5	4			
8:30		15	11	18				20:30		4	3	3			
8:45		8	11	7				20:45		1	3	1			
9:00		14	9	6				21:00		1	2	1			
9:15		8	10	8				21:15		2	4	3			
9:30		3	10	6				21:30		2	2	3			
9:45		8	8	10				21:45		1	0	0			
10:00		4	3	5				22:00		2	4	2			
10:15		7	9	6				22:15		2	1	0			
10:30		4	12	7				22:30		1	1	1			
10:45		5	7	10				22:45		0	0	0			
11:00		7	8	8				23:00		0	2	0			
11:15		10	11	9				23:15		1	0	4			
11:30		9	10	9				23:30		0	0	2			
11:45		14	5	8				23:45		0	1	0			



Site notes:

Sparton Rd between West Saanich Rd and Oldfield Rd

Eastbound

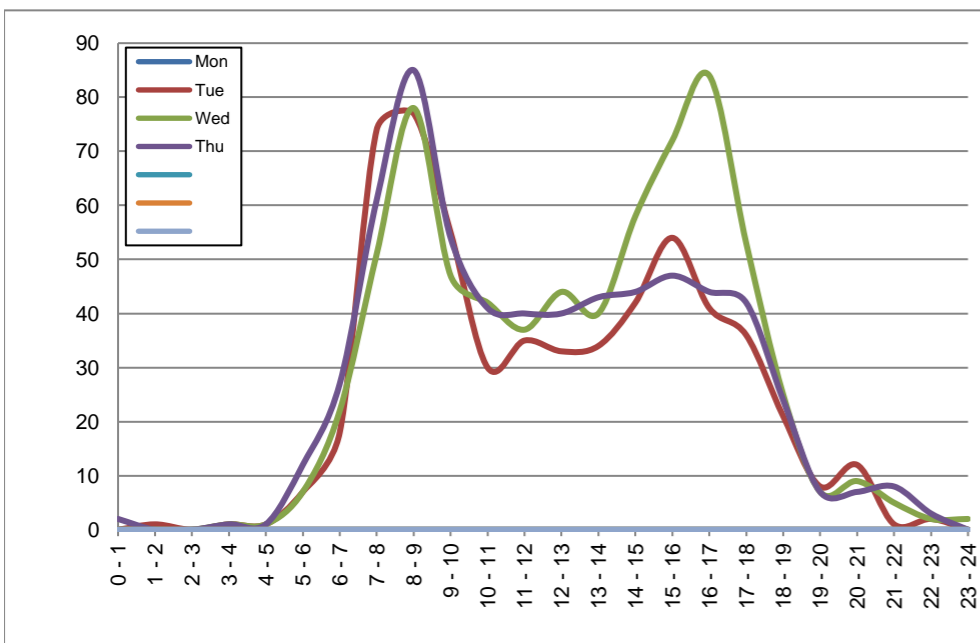
February 24, 2020 to February 27, 2020

Hourly Volumes

Time Period	Mon	Tue	Wed	Thu			
	Feb 24	Feb 25	Feb 26	Feb 27			
0 - 1		0	0	2			
1 - 2		1	0	0			
2 - 3		0	0	0			
3 - 4		1	1	1			
4 - 5		1	1	1			
5 - 6		7	7	12			
6 - 7		18	22	27			
7 - 8		74	51	61			
8 - 9		77	78	85			
9 - 10		55	47	54			
10 - 11		30	42	41			
11 - 12		35	37	40			
12 - 13		33	44	40			
13 - 14		34	40	43			
14 - 15		42	58	44			
15 - 16		54	72	47			
16 - 17		41	84	44			
17 - 18		36	53	42			
18 - 19		21	25	24			
19 - 20		8	7	7			
20 - 21		12	9	7			
21 - 22		1	5	8			
22 - 23		2	2	3			
23 - 24		0	2	0			
Day Total		583	687	633			

15-Minute Volumes

Time Start	Mon	Tue	Wed	Thu			
	Feb 24	Feb 25	Feb 26	Feb 27			
0:00		0	0	1			
0:15		0	0	1			
0:30		0	0	0			
0:45		0	0	0			
1:00		0	0	0			
1:15		0	0	0			
1:30		1	0	0			
1:45		0	0	0			
2:00		0	0	0			
2:15		0	0	0			
2:30		0	0	0			
2:45		0	0	0			
3:00		0	1	0			
3:15		1	0	1			
3:30		0	0	0			
3:45		0	0	0			
4:00		1	0	0			
4:15		0	0	0			
4:30		0	0	0			
4:45		0	1	1			
5:00		2	1	2			
5:15		1	1	1			
5:30		3	3	2			
5:45		1	2	7			
6:00		4	3	2			
6:15		2	3	7			
6:30		7	6	6			
6:45		5	10	12			
7:00		5	5	3			
7:15		25	16	15			
7:30		16	13	17			
7:45		28	17	26			
8:00		21	16	21			
8:15		24	23	24			
8:30		18	15	14			
8:45		14	24	26			
9:00		21	2	10			
9:15		15	19	15			
9:30		8	18	13			
9:45		11	8	16			
10:00		8	12	13			
10:15		6	10	9			
10:30		8	9	13			
10:45		8	11	6			
11:00		9	13	15			
11:15		7	10	8			
11:30		12	7	9			
11:45		7	7	8			
12:00			7	15	4		
12:15			5	11	17		
12:30			12	11	9		
12:45			9	7	10		
13:00			9	9	12		
13:15			4	8	10		
13:30			10	9	7		
13:45			11	14	14		
14:00			12	8	12		
14:15			13	11	14		
14:30			8	21	9		
14:45			9	18	9		
15:00			20	19	16		
15:15			15	14	10		
15:30			11	16	12		
15:45			8	23	9		
16:00			11	24	8		
16:15			16	24	13		
16:30			9	22	8		
16:45			5	14	15		
17:00			5	10	14		
17:15			9	25	11		
17:30			9	8	12		
17:45			13	10	5		
18:00			6	9	7		
18:15			7	4	4		
18:30			5	7	10		
18:45			3	5	3		
19:00			4	3	3		
19:15			3	2	1		
19:30			0	0	3		
19:45			1	2	0		
20:00			2	4	0		
20:15			4	2	4		
20:30			4	1	0		
20:45			2	2	3		
21:00			0	3	2		
21:15			1	1	0		
21:30			0	1	5		
21:45			0	0	1		
22:00			1	0	2		
22:15			0	0	0		
22:30			0	1	1		
22:45			1	1	0		
23:00			0	0	0		
23:15			0	1	0		
23:30			0	0	0		
23:45			0	1	0		



Site notes:

Vehicle Speed Summary

Saanich Engineering Department

Count Id: [C0066-01](#)

Filename: [Sparton Rd between West Saanich Rd and Oldfield Rd-Feb-2020.xlsm](#)

Location: Sparton Rd between West Saanich Rd and Oldfield Rd

Note:

Direction: **East-West**

Dates: **February 25, 2020 To February 27, 2020**

Filtered data

AVG. SPEED	28 mph	45 km/h
50 % SPEED	28 mph	45 km/h
85 % SPEED	33 mph	53 km/h
95 % SPEED	36 mph	58 km/h

Location Map



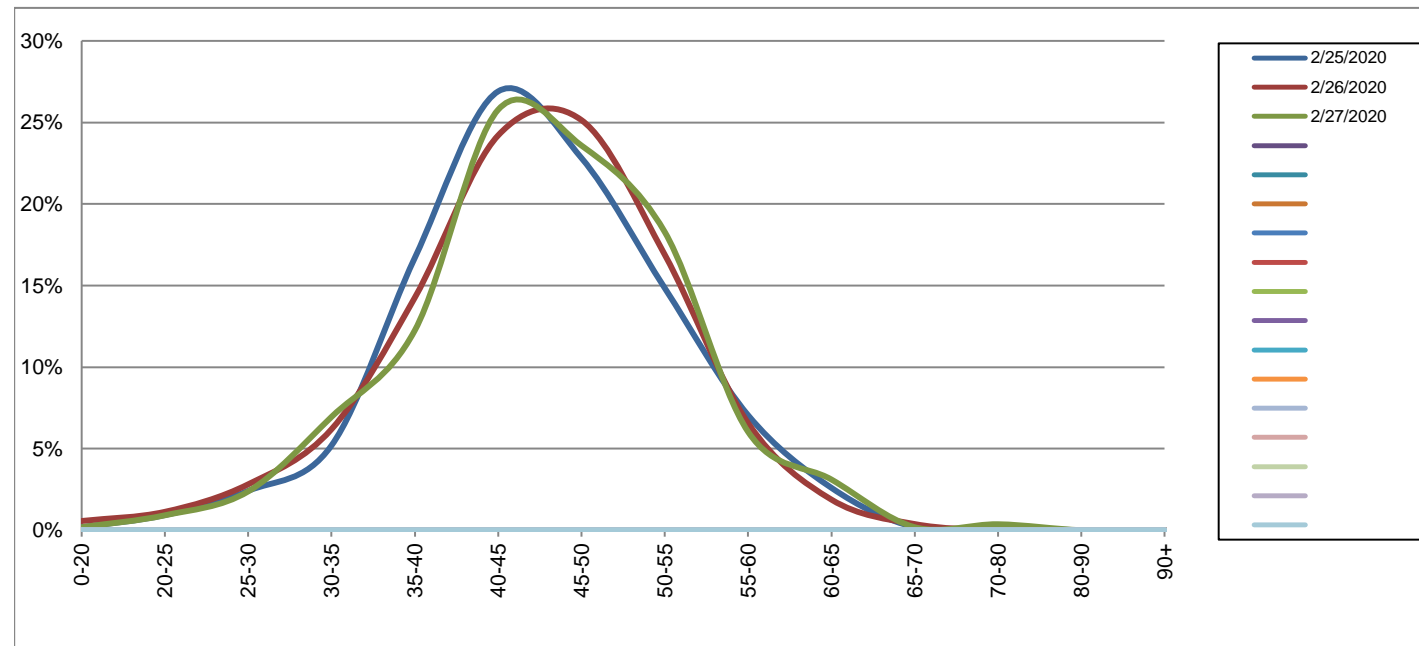
Sparton Rd between West Saanich Rd and Oldfield Rd

Westbound
February 25, 2020 to February 27, 2020

Daily Speed Bin Percentages															Daily Speed Bin Volumes														Total	Avg.
Bin #	1	2	3	4	5	6	7	8	9	10	11	12	13	14	1	2	3	4	5	6	7	8	9	10	11	12	13	14	Volume	Speed
Bin Speeds	0-20	20-25	25-30	30-35	35-40	40-45	45-50	50-55	55-60	60-65	65-70	70-80	80-90	90+	0-20	20-25	25-30	30-35	35-40	40-45	45-50	50-55	55-60	60-65	65-70	70-80	80-90	90+		
2/25/2020	0.2%	0.9%	2.4%	5.2%	16.7%	26.9%	22.8%	14.8%	7.1%	2.6%	0.2%	0.2%	0.0%	0.0%	1	5	13	28	90	145	123	80	38	14	1	1	0	0	539	45
2/26/2020	0.6%	1.1%	2.8%	6.2%	14.3%	24.2%	25.1%	16.9%	6.6%	1.9%	0.4%	0.0%	0.0%	0.0%	3	6	15	33	76	129	134	90	35	10	2	0	0	0	533	45
2/27/2020	0.2%	0.9%	2.4%	6.9%	12.2%	25.8%	23.6%	18.3%	6.0%	3.1%	0.2%	0.4%	0.0%	0.0%	1	5	13	38	67	141	129	100	33	17	1	2	0	0	547	45
Total	0.3%	1.0%	2.5%	6.1%	14.4%	25.6%	23.8%	16.7%	6.5%	2.5%	0.2%	0.2%	0.0%	0.0%	5	16	41	99	233	415	386	270	106	41	4	3	0	0	1619	45

Speed Data Summary

Bin #	1	2	3	4	5	6	7	8	9	10	11	12	13	14	Total
Bin Speeds	0-20	20-25	25-30	30-35	35-40	40-45	45-50	50-55	55-60	60-65	65-70	70-80	80-90	90+	
Survey Total	5	16	41	99	233	415	386	270	106	41	4	3	0	0	1619
% Total	0.3%	1.0%	2.5%	6.1%	14.4%	25.6%	23.8%	16.7%	6.5%	2.5%	0.2%	0.2%	0.0%	0.0%	100%
Accumulated %	0.3%	1.3%	3.8%	9.9%	24.3%	50.0%	73.8%	90.5%	97.0%	99.6%	99.8%	100.0%	100.0%	100%	
Inverse Accum. %	99.7%	98.7%	96.2%	90.1%	75.7%	50.0%	26.2%	9.5%	3.0%	0.4%	0.2%	0.0%	0.0%	0.0%	
Average Speed	45 KM/H														



Site notes:

Sparton Rd between West Saanich Rd and Oldfield Rd

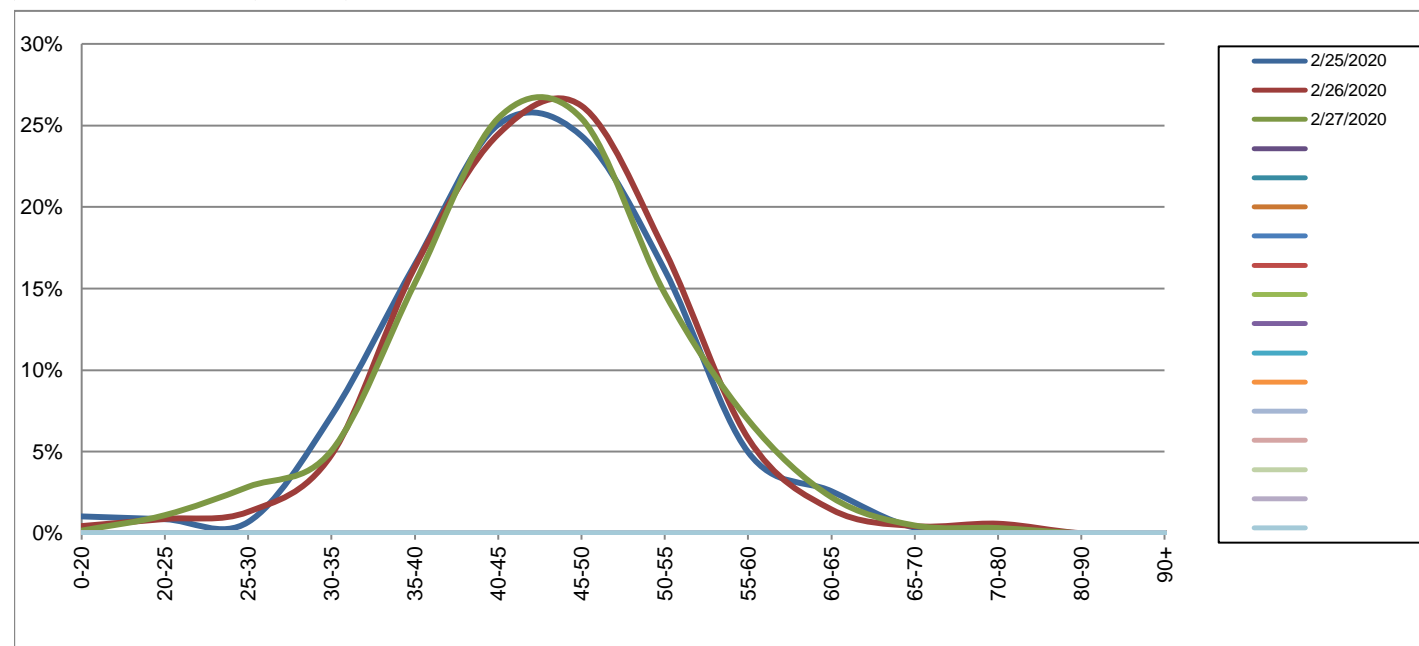
Eastbound

February 25, 2020 to February 27, 2020

Daily Speed Bin Percentages															Daily Speed Bin Volumes														Total	Avg.
Bin #	1	2	3	4	5	6	7	8	9	10	11	12	13	14	1	2	3	4	5	6	7	8	9	10	11	12	13	14	Volume	Speed
Bin Speeds	0-20	20-25	25-30	30-35	35-40	40-45	45-50	50-55	55-60	60-65	65-70	70-80	80-90	90+	0-20	20-25	25-30	30-35	35-40	40-45	45-50	50-55	55-60	60-65	65-70	70-80	80-90	90+		
2/25/2020	1.0%	0.9%	0.7%	7.2%	16.5%	25.0%	24.4%	16.1%	5.0%	2.6%	0.3%	0.3%	0.0%	0.0%	6	5	4	42	96	146	142	94	29	15	2	2	0	0	583	45
2/26/2020	0.4%	0.9%	1.3%	4.8%	16.3%	24.5%	26.2%	17.3%	5.8%	1.5%	0.4%	0.6%	0.0%	0.0%	3	6	9	33	112	168	180	119	40	10	3	4	0	0	687	45
2/27/2020	0.2%	1.1%	2.8%	5.1%	15.3%	25.4%	25.4%	14.7%	7.0%	2.2%	0.5%	0.3%	0.0%	0.0%	1	7	18	32	97	161	161	93	44	14	3	2	0	0	633	45
Total	0.5%	0.9%	1.6%	5.6%	16.0%	25.0%	25.4%	16.1%	5.9%	2.0%	0.4%	0.4%	0.0%	0.0%	10	18	31	107	305	475	483	306	113	39	8	8	0	0	1903	45

Speed Data Summary

Bin #	1	2	3	4	5	6	7	8	9	10	11	12	13	14	Total
Bin Speeds	0-20	20-25	25-30	30-35	35-40	40-45	45-50	50-55	55-60	60-65	65-70	70-80	80-90	90+	
Survey Total	10	18	31	107	305	475	483	306	113	39	8	8	0	0	1903
% Total	0.5%	0.9%	1.6%	5.6%	16.0%	25.0%	25.4%	16.1%	5.9%	2.0%	0.4%	0.4%	0.0%	0.0%	100%
Accumulated %	0.5%	1.5%	3.1%	8.7%	24.8%	49.7%	75.1%	91.2%	97.1%	99.2%	99.6%	100.0%	100.0%	100%	
Inverse Accum. %	99.5%	98.5%	96.9%	91.3%	75.2%	50.3%	24.9%	8.8%	2.9%	0.8%	0.4%	0.0%	0.0%	0.0%	
Average Speed	45 KM/H														



Site notes:

Sparton Rd between West Saanich Rd and Oldfield Rd

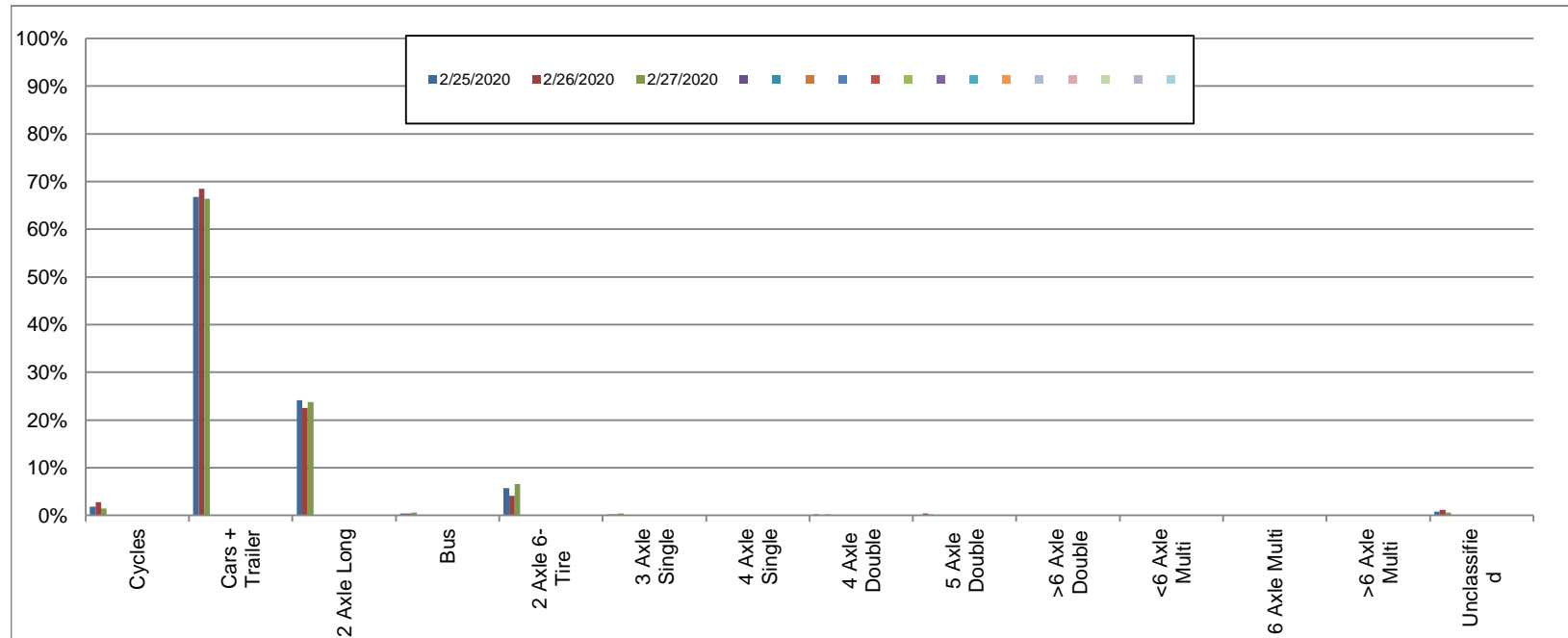
Westbound

February 25, 2020 to February 27, 2020

Daily Class Bin Percentages															Daily Class Bin Volumes											Total Volume				
Bin #	1	2	3	4	5	6	7	8	9	10	11	12	13	14	1	2	3	4	5	6	7	8	9	10	11		12	13	14	
Bin Class	Cycles	Cars + Trailer	2 Axle Long	Bus	2 Axle 6-Tire	3 Axle Single	4 Axle Single	4 Axle Double	5 Axle Double	>6 Axle Double	<6 Axle Multi	6 Axle Multi	>6 Axle Multi	Unclassified	Cycles	Cars + Trailer	2 Axle Long	Bus	2 Axle 6-Tire	3 Axle Single	4 Axle Single	4 Axle Double	5 Axle Double	>6 Axle Double	<6 Axle Multi	6 Axle Multi	>6 Axle Multi	Unclassified		
2/25/2020	1.9%	66.8%	24.1%	0.4%	5.8%	0.2%	0.0%	0.2%	0.0%	0.0%	0.0%	0.0%	0.0%	0.7%	10	360	130	2	31	1	0	1	0	0	0	0	0	0	4	539
2/26/2020	2.8%	68.5%	22.5%	0.4%	4.1%	0.2%	0.0%	0.0%	0.4%	0.0%	0.0%	0.0%	0.0%	1.1%	15	365	120	2	22	1	0	0	2	0	0	0	0	0	6	533
2/27/2020	1.5%	66.4%	23.8%	0.5%	6.6%	0.4%	0.0%	0.2%	0.2%	0.0%	0.0%	0.0%	0.0%	0.5%	8	363	130	3	36	2	0	1	1	0	0	0	0	0	3	547
Total	2.0%	67.2%	23.5%	0.4%	5.5%	0.2%	0.0%	0.1%	0.2%	0.0%	0.0%	0.0%	0.0%	0.8%	33	1088	380	7	89	4	0	2	3	0	0	0	0	13	1619	

Class Data Summary

Bin #	1	2	3	4	5	6	7	8	9	10	11	12	13	14	Total Volume
Bin Class	Cycles	Cars + Trailer	2 Axle Long	Bus	2 Axle 6-Tire	3 Axle Single	4 Axle Single	4 Axle Double	5 Axle Double	>6 Axle Double	<6 Axle Multi	6 Axle Multi	>6 Axle Multi	Unclassified	
Survey Total	33	1088	380	7	89	4	0	2	3	0	0	0	0	13	1619
% Total	2.0%	67.2%	23.5%	0.4%	5.5%	0.2%	0.0%	0.1%	0.2%	0.0%	0.0%	0.0%	0.0%	0.8%	100%
Accumulated %	2.0%	69.2%	92.7%	93.1%	98.6%	98.9%	98.9%	99.0%	99.2%	99.2%	99.2%	99.2%	99.2%	100.0%	
Inv. Accum. %	98.0%	30.8%	7.3%	6.9%	1.4%	1.1%	1.1%	1.0%	0.8%	0.8%	0.8%	0.8%	0.8%	0.0%	



Classification Descriptions

Bin #	Bin Description
1	Motorcycles
2	Passenger cars, including those with recreational trailers
3	2-axle pick-ups, vans, and RVs, including those with recreational trailers
4	Buses
5	2-axle, 6-tire single units
6	3-axle single units
7	4-axle single units
8	3-axle or 4-axle double unit
9	5-axle double unit
10	6-, 7-, or 8-axle double unit
11	5-axle multiple unit
12	6-axle multiple unit
13	7-or-more-axle multiple unit
14	Vehicles that could not be classified

Site notes:

Sparton Rd between West Saanich Rd and Oldfield Rd

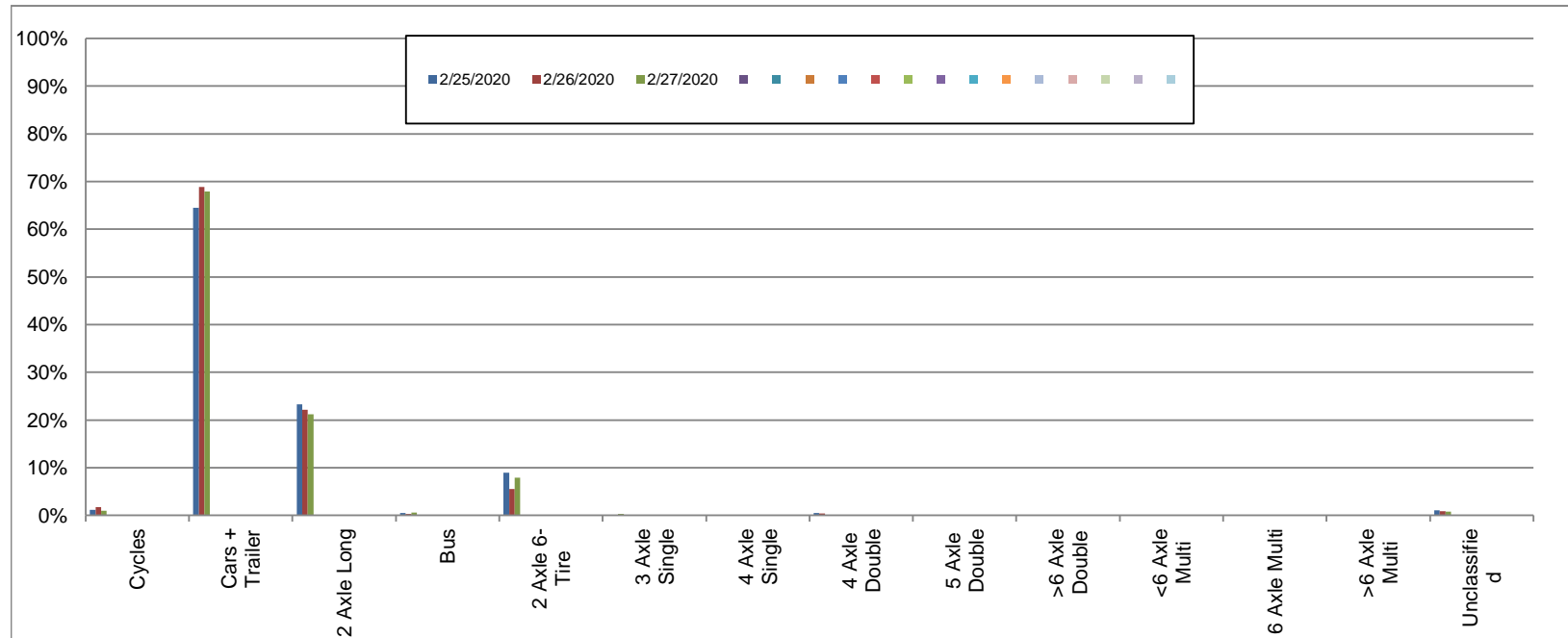
Eastbound

February 25, 2020 to February 27, 2020

Daily Class Bin Percentages															Daily Class Bin Volumes															
Bin #	1	2	3	4	5	6	7	8	9	10	11	12	13	14	1	2	3	4	5	6	7	8	9	10	11	12	13	14	Total Volume	
Bin Class	Cycles	Cars + Trailer	2 Axle Long	Bus	2 Axle 6-Tire	3 Axle Single	4 Axle Single	4 Axle Double	5 Axle Double	>6 Axle Double	<6 Axle Multi	6 Axle Multi	>6 Axle Multi	Unclassified	Cycles	Cars + Trailer	2 Axle Long	Bus	2 Axle 6-Tire	3 Axle Single	4 Axle Single	4 Axle Double	5 Axle Double	>6 Axle Double	<6 Axle Multi	6 Axle Multi	>6 Axle Multi	Unclassified		
2/25/2020	1.2%	64.5%	23.3%	0.5%	8.9%	0.0%	0.0%	0.5%	0.0%	0.0%	0.0%	0.0%	0.0%	1.0%	7	376	136	3	52	0	0	3	0	0	0	0	0	0	6	583
2/26/2020	1.7%	68.9%	22.1%	0.3%	5.5%	0.1%	0.0%	0.4%	0.0%	0.0%	0.0%	0.0%	0.0%	0.9%	12	473	152	2	38	1	0	3	0	0	0	0	0	0	6	687
2/27/2020	0.9%	67.9%	21.2%	0.6%	7.9%	0.3%	0.0%	0.2%	0.2%	0.0%	0.0%	0.0%	0.0%	0.8%	6	430	134	4	50	2	0	1	1	0	0	0	0	0	5	633
Total	1.3%	67.2%	22.2%	0.5%	7.4%	0.2%	0.0%	0.4%	0.1%	0.0%	0.0%	0.0%	0.0%	0.9%	25	1279	422	9	140	3	0	7	1	0	0	0	0	17	1903	

Class Data Summary

Bin #	1	2	3	4	5	6	7	8	9	10	11	12	13	14	Total Volume
Bin Class	Cycles	Cars + Trailer	2 Axle Long	Bus	2 Axle 6-Tire	3 Axle Single	4 Axle Single	4 Axle Double	5 Axle Double	>6 Axle Double	<6 Axle Multi	6 Axle Multi	>6 Axle Multi	Unclassified	Total Volume
Survey Total	25	1279	422	9	140	3	0	7	1	0	0	0	0	17	1903
% Total	1.3%	67.2%	22.2%	0.5%	7.4%	0.2%	0.0%	0.4%	0.1%	0.0%	0.0%	0.0%	0.0%	0.9%	100%
Accumulated %	1.3%	68.5%	90.7%	91.2%	98.5%	98.7%	98.7%	99.1%	99.1%	99.1%	99.1%	99.1%	99.1%	100.0%	
Inv. Accum. %	98.7%	31.5%	9.3%	8.8%	1.5%	1.3%	1.3%	0.9%	0.9%	0.9%	0.9%	0.9%	0.9%	0.0%	



Classification Descriptions

Bin #	Bin Description
1	Motorcycles
2	Passenger cars, including those with recreational trailers
3	2-axle pick-ups, vans, and RVs, including those with recreational trailers
4	Buses
5	2-axle, 6-tire single units
6	3-axle single units
7	4-axle single units
8	3-axle or 4-axle double unit
9	5-axle double unit
10	6-, 7-, or 8-axle double unit
11	5-axle multiple unit
12	6-axle multiple unit
13	7-or-more-axle multiple unit
14	Vehicles that could not be classified

Site notes: